



The World's No. 1 in Can Machinery

Cereal Lines

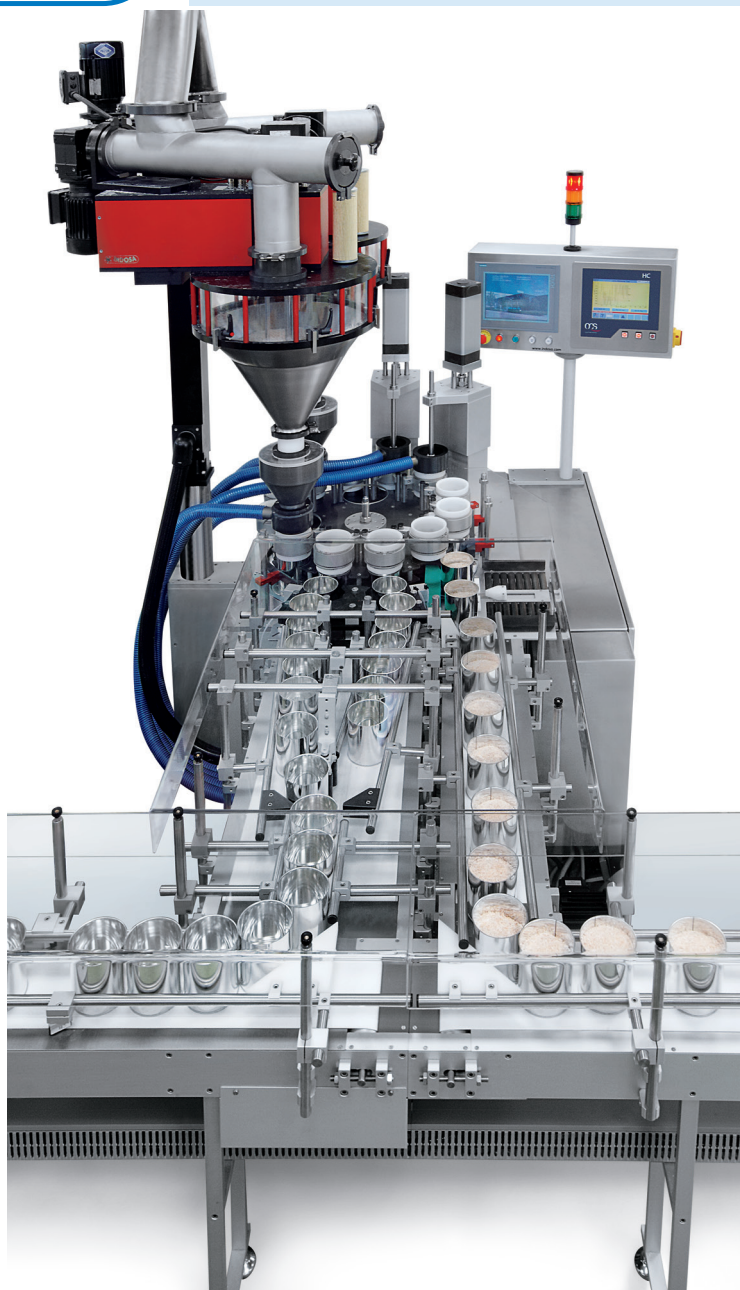
Filling, compressing and seaming machines
for cereals in tin cans

2010.1



Grabher INDOSA-Maschinenbau AG
Industriestrasse 24
CH-9434 Au (St.Gallen)
Schweiz

Telefon +41 (0)71 747 57 57
Telefax +41 (0)71 747 57 47
www.indosa.com
info@indosa.com



- **Fully automatic filling machine**
- **Integrated check-weighing system with feedback control**
- **Automatic height adjustment**
- **Touch screen GUI (graphical user interface)**
- **For powder and granulates**
- **Compressing system for oats and cereals**

Capacity	up to 80 cans/min
Can diameter	up to 127mm
Can height	up to 340mm
Cans	Tin, composite or plastic cans

Grabher INDOSA AG - The World's No. 1 in Can Machinery

since 1936

Industriestrasse 24
P.O.Box 447
CH-9434 Au (St.Gallen)
Switzerland

Telephone: +41 (0)71 747 57 57
Telefax: +41 (0)71 747 57 47
Internet: www.indosa.com
E-Mail: info@indosa.com



The World's No. 1 in Can Machinery

Fully automatic can

4.0 Dust Collection System

- Product dust collector with distributor
- Dust separator for cleaning system
- Dust separator for auger filler

5.0 Filling Machine for Oats & Cereals

- dosing system with vertical auger feeder and agitator
- double filling station with lifting tables and vibrators
- dust collection system with dust separator
- Special Compressing system

2.0 CanFeeding System

- Accumulation and buffering table for empty cans
- Rotary table feeder for separating empty cans in one lane

1.0 Semi-automatic depalletizing system

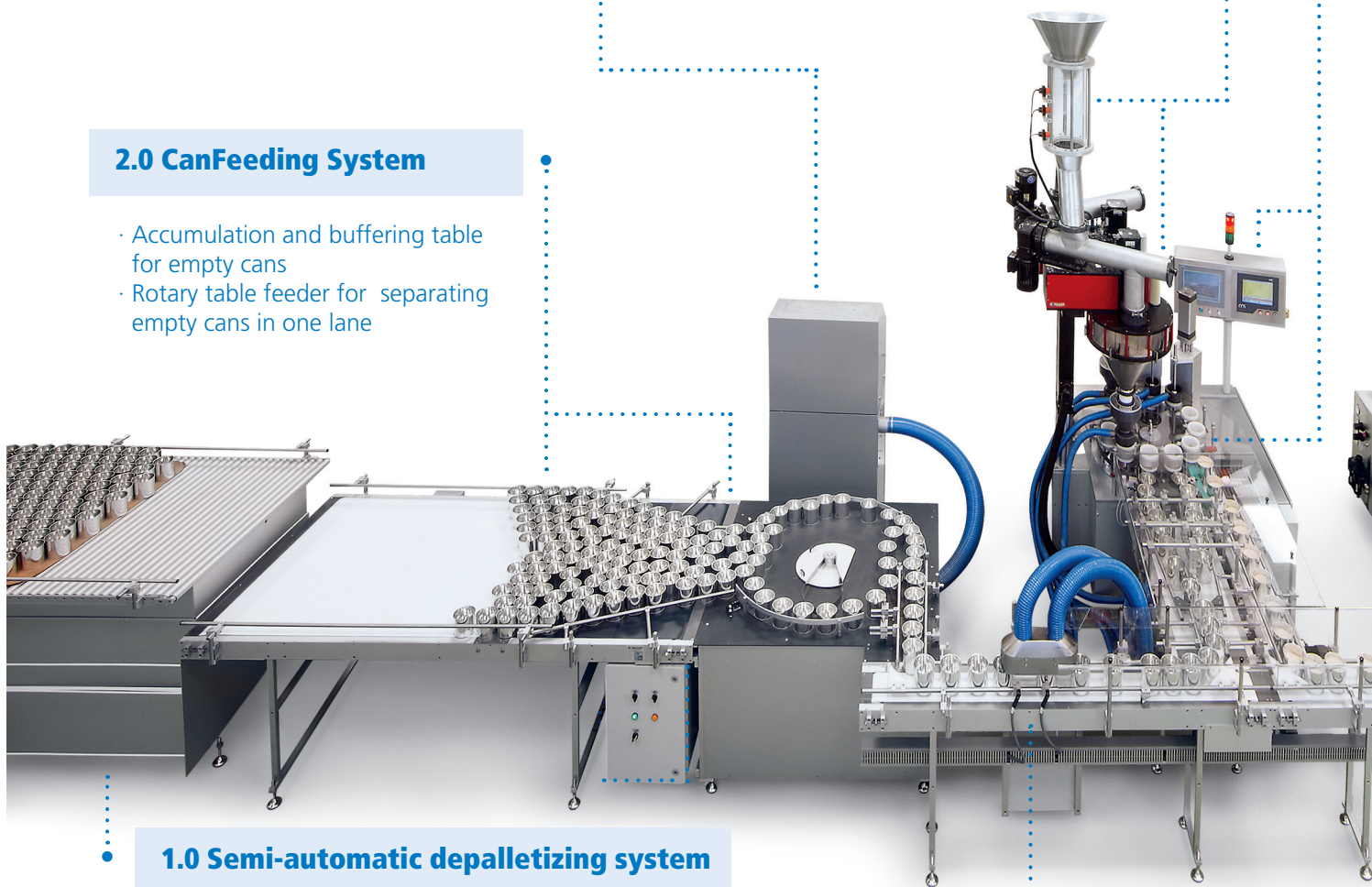
- Hydraulic transference lift to move the trays with the cans onto buffering table
- Control board for height adjustment

3.0 Can Cleaning & Sanitizing

- Internal can cleaning of the empty cans with ionized and treated air
- central dust collection system

INDOSA Oats Line

products: oats, cereals, flaked and bulky products
can type: tin cans or aluminium cans
can range: Ø 73mm to Ø127mm, height: 50mm to 190mm
technology: filling the can with a special compressing system
capacity: < 80 cans/min (depending on product)



filling and seaming line for oats and cereals

6.0 Product Feeding System

- product inlet from hopper or conveyor
- horizontal auger feeder for outlet hopper
- proportional levelling control

7.0 Check Weighing System for filled cans

- Feedback control for the auger filler
- Output device for failed weighted cans
- Statistic program with interface

10.0 System to apply Over-Caps

- Storage hopper for over caps
- Position-oriented sorting and feeding of caps

11.0 HMI-Interface

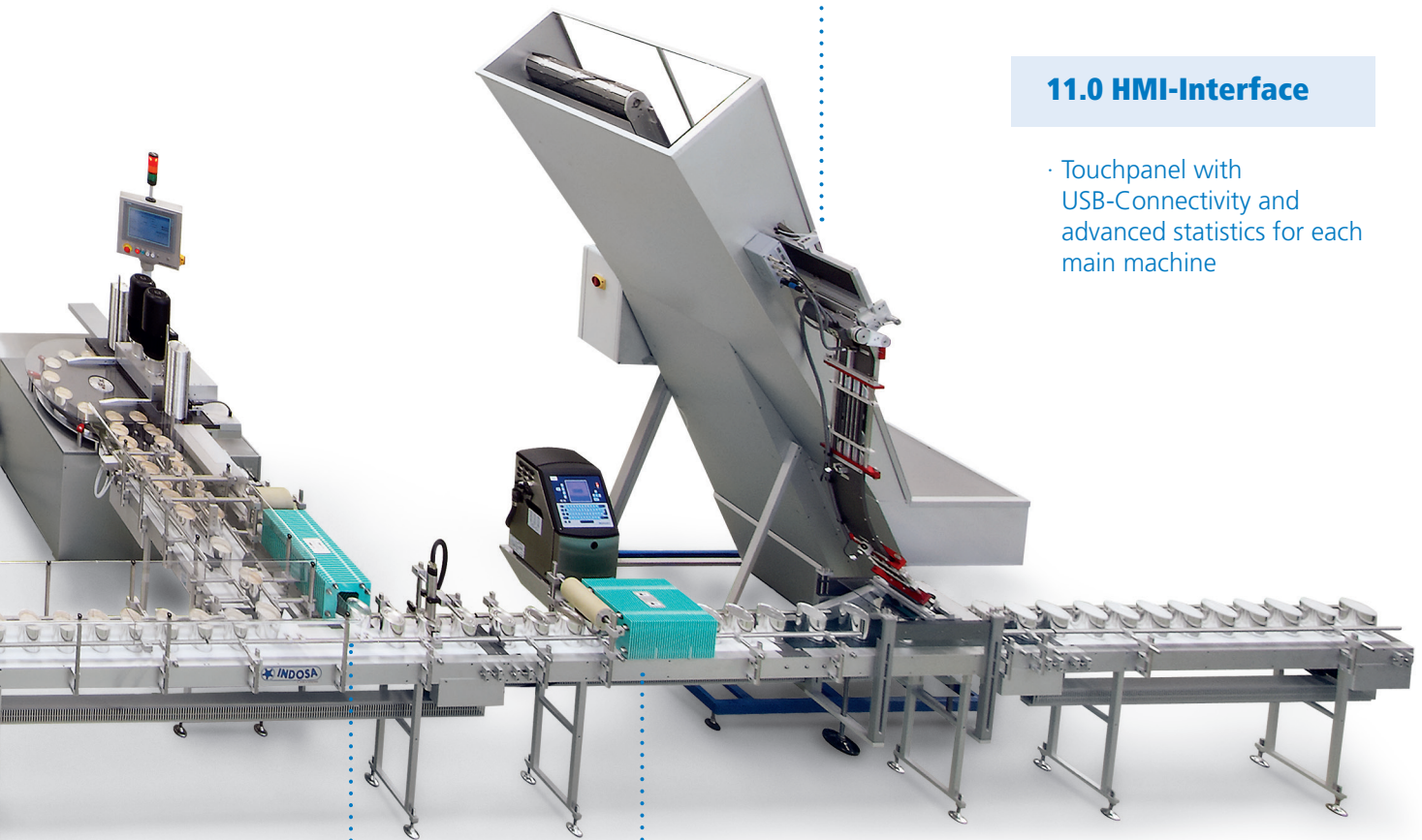
- Touchpanel with USB-Connectivity and advanced statistics for each main machine

9.0 Fully integrated labelling system

- Control and recording with personalized label
- Freely programmable (bar code, expiry date, batch number, etc.)
- In all current languages and typesets available (chinese, arabic, etc.)
- Low maintenance environment thanks to clean integration in every machine type

8.0 Can Turning Devices

- Turning tunnel for turning cans 180°
- Changeable per can size





INDOSA matic 127 Twin P can seamer

- Fully automatic can seaming machine
- Indexing turret for can positioning
- Conveyor for can inlet and can outlet
- **Options:** INDOSA TR2 filling station, check weigher, capper, etc.
- **Options:** Integrated Handling & Labelling System with InkJet

Capacity

approx. 80-100 cans/min

Can height

up to 340mm

Power cons.

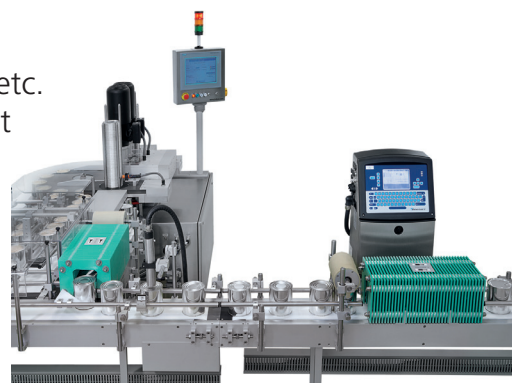
1.5kW

Can diameter

up to 131mm

Cans

Tin- or composite cans with
tin- or aluminium lids



Grabher INDOSA AG - The World's No. 1 in Can Machinery

since 1936

Industriestrasse 24
P.O.Box 447
CH-9434 Au (St.Gallen)
Switzerland

Telephone: +41 (0)71 747 57 57
Telefax: +41 (0)71 747 57 47
Internet: www.indosa.com
E-Mail: info@indosa.com

FULLY AUTOMATIC CAN SEAMING MACHINE INDOSA matic P

Revolving machine with with 12 portion transport wheel.

Station for seaming-on of a metal lid or metal bottom, a tear-off lid or patent lid, a „Penny-Lever“ lid or ring etc., onto tin plate, aluminium or composite cans, with station for automatic destacking of lids.

TECHNICAL ADVANTAGES

- Modern, neat machine, mainly made of stainless steel, hard-chrome plated steel and anodized hard aluminium
- Solid, maintenance-free construction with lifetime lubricated bearings.
- High capacity, constructed for continuous industry use.
- Easy and safe operation.
- Field-proven, high-performance design.
- Thousand times world-wide tested and proved.
- Compact, space-saving construction.
- Fully automatic operating sequence with all output signals for connecting up- and downstream machines.
- Optimal operational safety by proved electrical control in watertight casing with contact-free object detectors

EASY AND QUICK FORMAT TOOL CHANGING

- Switching over to other can sizes in minutes by simply exchanging of marked and specially colour-coded format parts.
- Infinitely variable spindle sleeve pressure (no progressive spring)

THE INDOSA matic

is the basic machine for the modular construction of a fully automatic line from depalletizing the cans over filling and seaming to packing.

POSSIBILITY OF LATER EXTENSIONS WITH MANY ADDITIONAL INDOSA-STATIONS

- for fillers
- for tin can manufactures
- for composite can manufactures

POSSIBILITY OF ADDITION AND COMBINATION WITH INDOSA-TRANSPORT SYSTEMS

for cans, lids, etc.

Grabher INDOSA AG - The World's No. 1 in Can Machinery

since 1936

Industriestrasse 24
P.O.Box 447
CH-9434 Au (St.Gallen)
Switzerland

Telephone: +41 (0)71 747 57 57
Telefax: +41 (0)71 747 57 47
Internet: www.indosa.com
E-Mail: info@indosa.com



Automatic line for applying of snap-on lids to cans

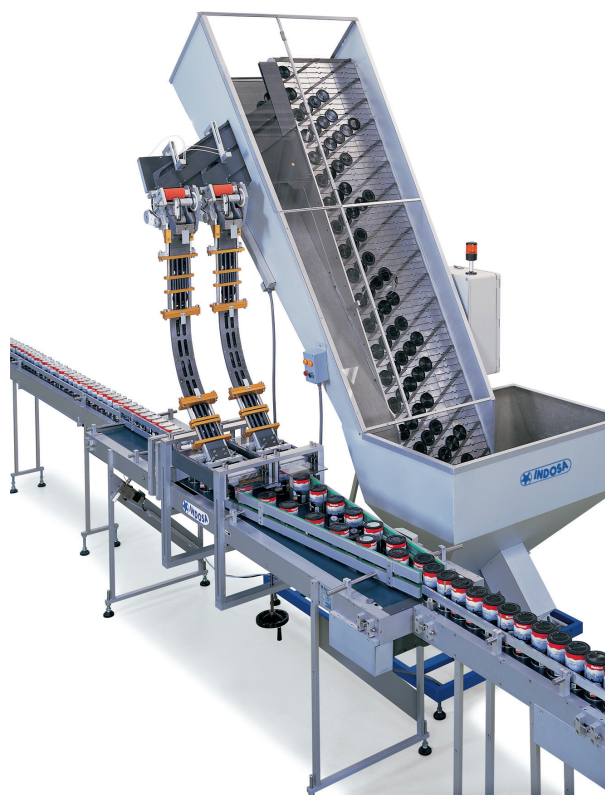
INDOSA MRA 153

Cap destacking magazine

INDOSA C 100 (C 131, C 153)

Machine for applying of snap-on lids to cans

Capacity: approx. 70 cans/min



Sorting and feeding device for caps or lids

INDOSA SF 184/3

Inclined slope conveyor with special device to turn inside-out lying lids.

Capacity: approx. 280 cans/min

INDOSA SF 184

Inclined slope conveyor with special device to turn inside-out lying lids.

Capacity: approx. 140 cans/min

Grabher INDOSA AG - The World's No. 1 in Can Machinery

since 1936

Industriestrasse 24
P.O.Box 447
CH-9434 Au (St.Gallen)
Switzerland

Telephone: +41 (0)71 747 57 57
Telefax: +41 (0)71 747 57 47
Internet: www.indosa.com
E-Mail: info@indosa.com

