

SPARTAN WRAP-AROUND



Compact Wrap-Around Systems For Cartons, Cases and Trays

Machine features include:

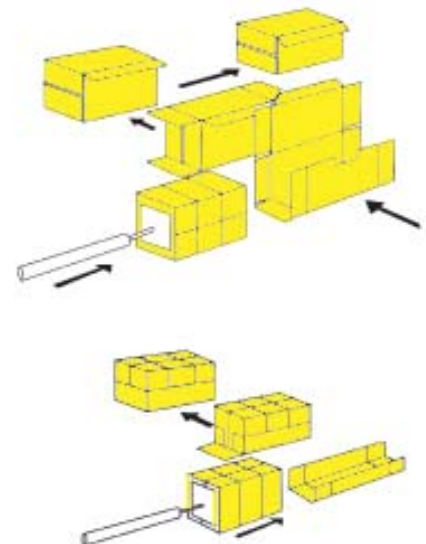
- Heavy duty construction
- Caster mounting
- Single load station (optional automatic loading/collating)
- Hot melt closure

Accommodates:

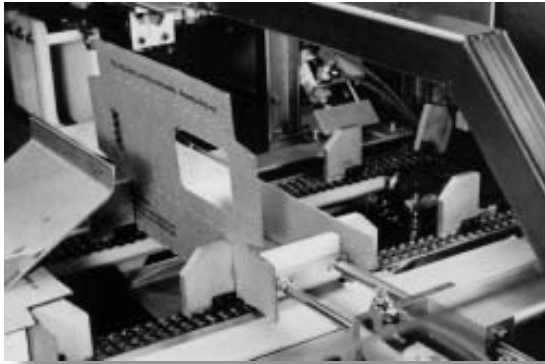
- Full wrap-around style blanks
- Open top wrap-around style trays
- Paperboard or corrugated

Method of Operation:

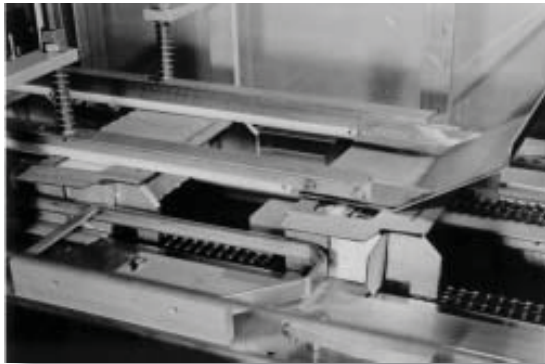
1. Forms blank (corrugated or paperboard) into a "U" shape and transports it to product load station.
2. Product loaded manually or by optional automatic product loading/collating device.
3. Loaded package moves through series of closure/end flap gluing stations. Gluing is done by a hot melt extruding system.
4. For full wrap-around style, right angle transfer device accommodates side joint (flap) gluing. Carton/case is discharged as a completed package.



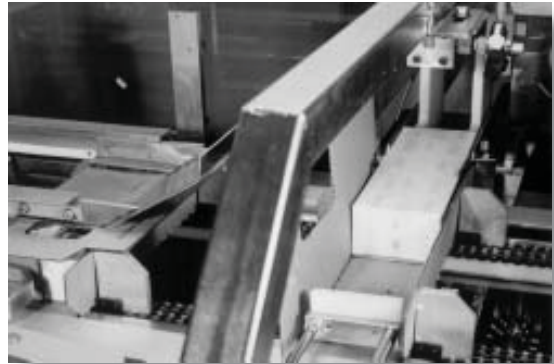
SPARTAN Wrap-Around Systems:



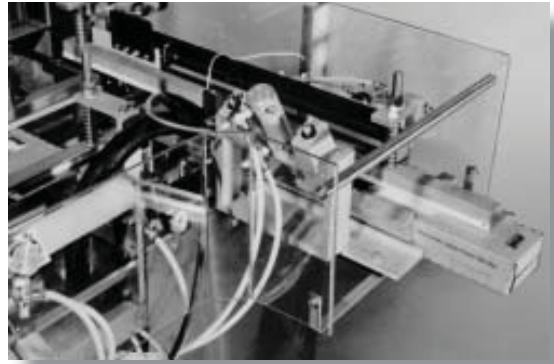
1. Partially formed blank is erected and transported to single product load station.



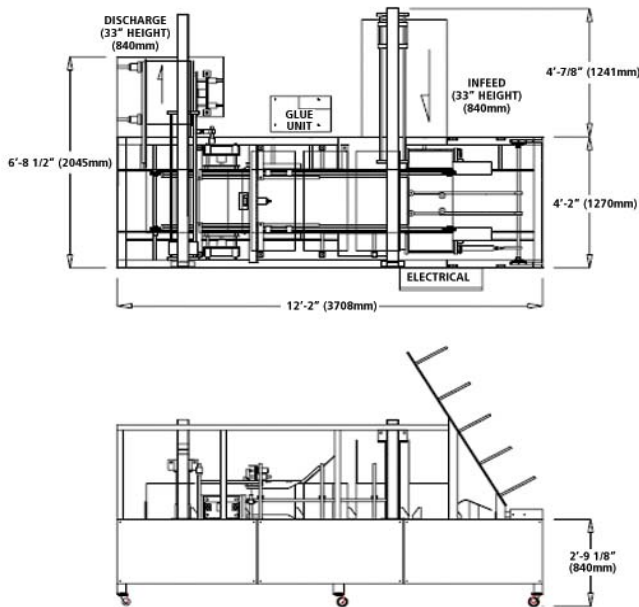
3. The package is then wrapped around the product and the end flaps are closed/sealed.



2. Product is loaded by optional automatic device (as shown) or manually.



4. The side joint (flap) is glued just prior to right angle discharge of completed package.



SPARTAN WRAP-AROUND ENGINEERING DETAILS

Size Range: (Carton/Case Size)
 Min 8" x 5" x 4-1/2"
 (203 x 127 x 115mm)
 Max. 24" x 15" x 14"
 (610 x 380 x 355mm)

Speed: Up to 1200 cartons per hour depending on case size and other factors.

Electrical: 220 volts 50/60 Hz, Single Phase.

Air: 80 psi (5.5 bar). Volume consumption 6.2 CFM, 33 SCFM (175 liters/min).

Shipping: Normally less than 3500 lbs. (1590kg)

Machines available to handle carton sizes outside of range listed above quoted on request. Note: All dimensions are approximate. Subject to change.



72 Pacella Park Drive, Randolph, MA 02368
 Telephone: +1 (781) 986-7500 Fax: +1 (781) 986-1553
 www.econocorp.com e-mail: info@econocorp.com

